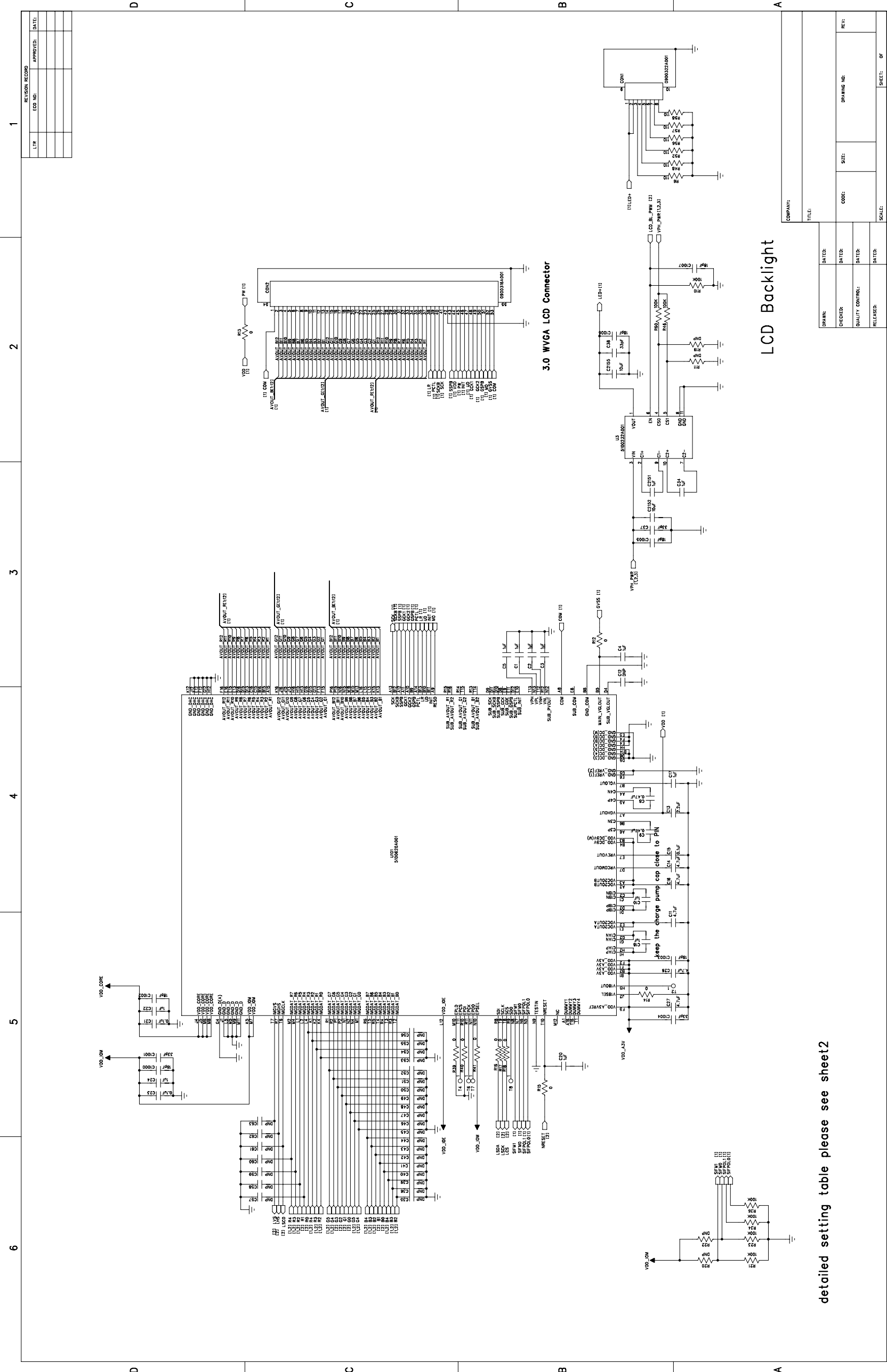


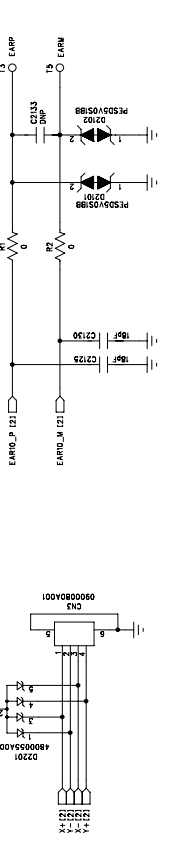
LCD Backlight

REV	DESCRIPTION	DATE
1	INITIAL RECORD	

detailed setting table please see sheet2

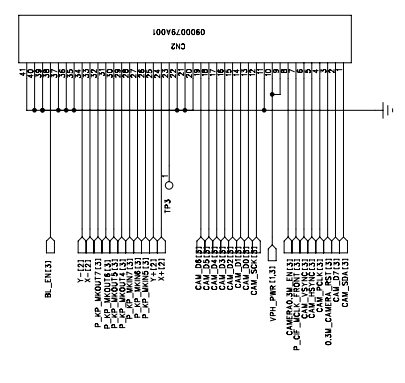
COMPANY:		TITLE:	
DESIGN:	DATE:	CHECKER:	DATE:



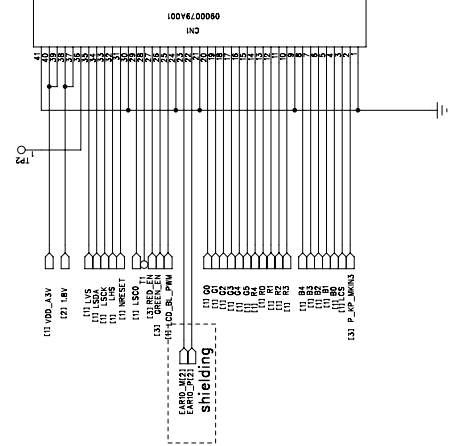


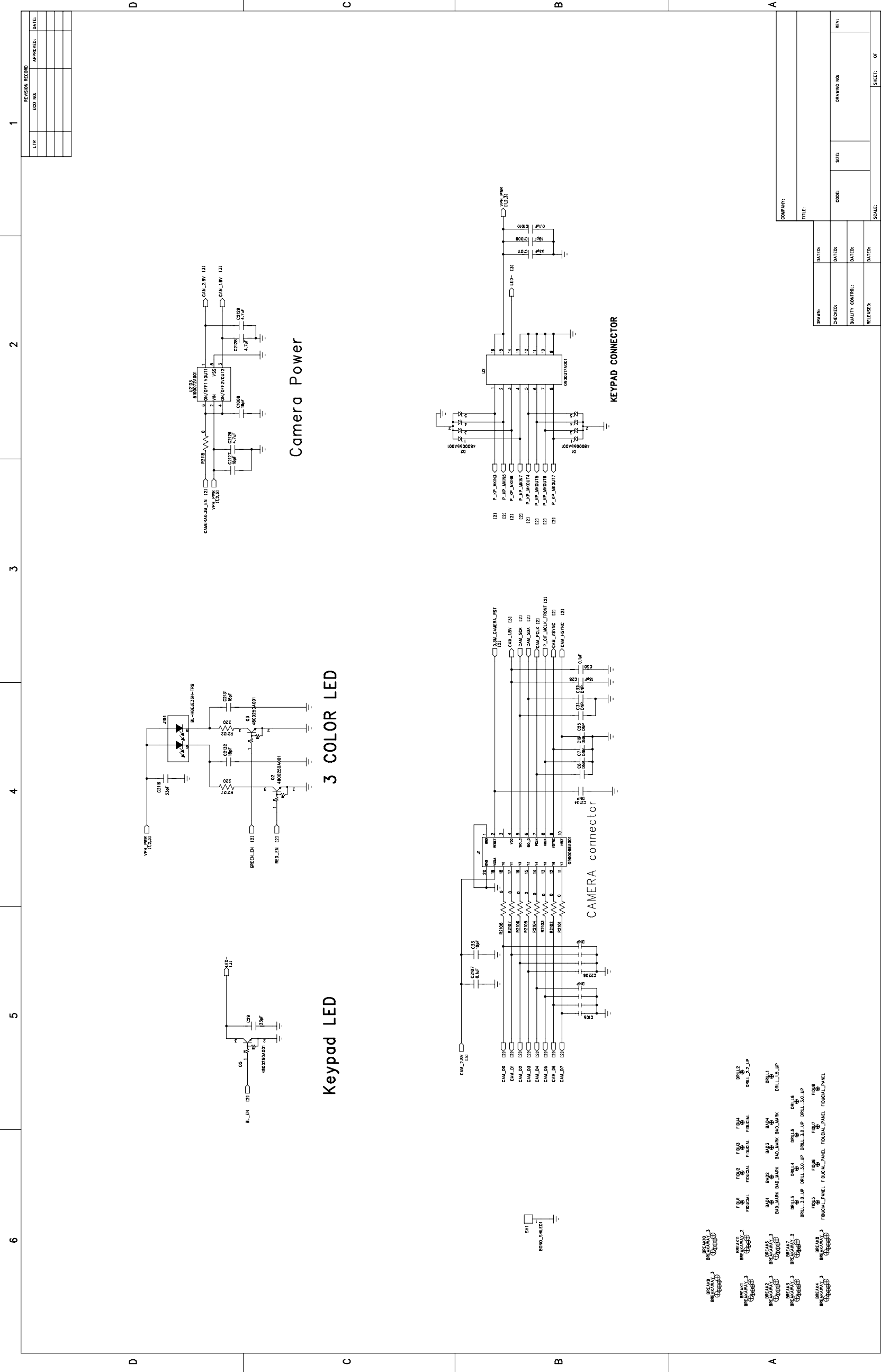
PUT THESE COMPONENTS CLOSE TO RECEIVER

SIFM1	SIFM0	SIFPOL1	SIFPOL0	DESCRIPTION
L	L	ACTIVE EDGE SETTING		Serial Interface:Mode2(address/data scheme)
L	H	L	X	Serial Interface:2C Bus Mode
L	H	H	X	HPC Interface
H	L	ACTIVE EDGE SETTING		Serial Interface: Mode(ope-code+address/data scheme)
H	H	ACTIVE EDGE SETTING	0 SETTING	Serial Interface:Mode3



SIFPOL1	SIFPOL0	DESCRIPTION		REMARK
		SCS	SCLK(SDM DATA CAPTURE EDGE)	
L	L	HIGH ACTIVE	SCLK FALLING	MODE1,2
L	H	HIGH ACTIVE	SCLK FALLING	MODE1,2
H	L	LOW ACTIVE	SCLK FALLING	MODE1,2
H	H	LOW ACTIVE	SCLK FALLING	MODE1,2
L	-(ID SETTING)	HIGH ACTIVE	SCLK RISING	MODE3
H	-(ID SETTING)	HIGH ACTIVE	SCLK FALLING	MODE3





REVISION RECORD	
ITER	DATE

COMPANY:		TITLE:	
DESIGN:	DATE:	CHECKED:	DATE:
QUALITY CONTROL:	DATE:	RELEASED:	DATE:
DRAWING NO:		SCALE:	
SHEET: 01		OF 01	